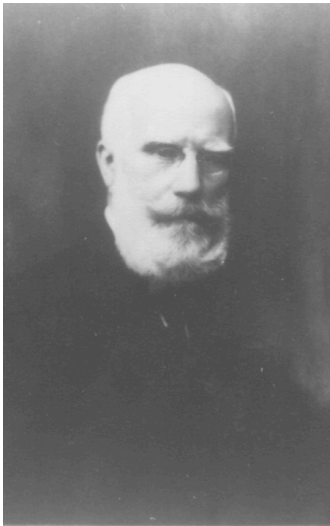


Micromounters Hall of Fame

George Washington Fiss

1834-1925

“Old Timer” Inducted in 1981



In the late 1870's G. W. Fiss was co-founder, concurrently with G. G. Rakestraw, of the art, science, and hobby of micromounting. He first used brass cells (with brass lids) cemented on glass slides for mounting micro specimens; then he changed to paper boxes in the early 1890's. He is credited with being the first to use blackened and shaped corks for micromount pedestals.

Frequently his early mounts were fragments from hand specimens in the collection of C. S. Bement. Others were purchased from G. L. English and A. E. Foote.

About 1897 C. S. Bement began a micromount collection using superb purchased specimens which Fiss mounted.

The best mounts went to Bement and the second best were kept by Fiss for his own collection. Bement later sold his collection to Fiss, who placed the best mounts in his own collection, and the ones removed from his own in the Bement collection. Later still the Bement collection was purchased by A. F. Holden and given to Harvard University.

Fiss was noted for his choice of superb specimens and meticulous care in the preparation and mounting of them. He often showed his mounts in groups gathered around a revolving table where each in turn could view the specimen under the microscope. Many were so impressed that they began their own micromount collections.

His collection and micromounting accessories are in the Academy of Natural Sciences, Philadelphia, Pennsylvania.